

January 23, 2019

QUIZ#1 Math102-sec 28.

Net Time Allowed: 20 minutes

Name:

ID #:

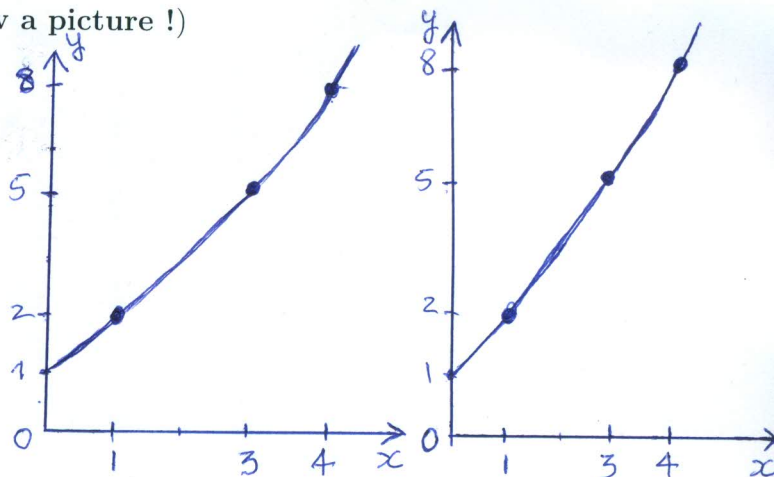
Serial #:

(Justify clearly your answer!)

Exercise1:(05 points)

Let $f(x)$ be a function with properties that $f'(x) > 0$ for all x , and that $f(0) = 1$, $f(1) = 2$, $f(3) = 5$ and $f(4) = 8$.

Show that $10 \leq \int_0^4 f(x) dx \leq 20$. (Hint: Draw a picture !)



Exercise2:(05 points)

Evaluate $I = \lim_{t \rightarrow 0^+} \frac{d}{dt} \int_1^{\sqrt{t}} \frac{\sin x^2}{x} dx$.