

KFUPM
Mathematics & Statistics

Term 191
MATH 106

Date: 27/10/2019
Duration: 15 minutes

Quiz 3

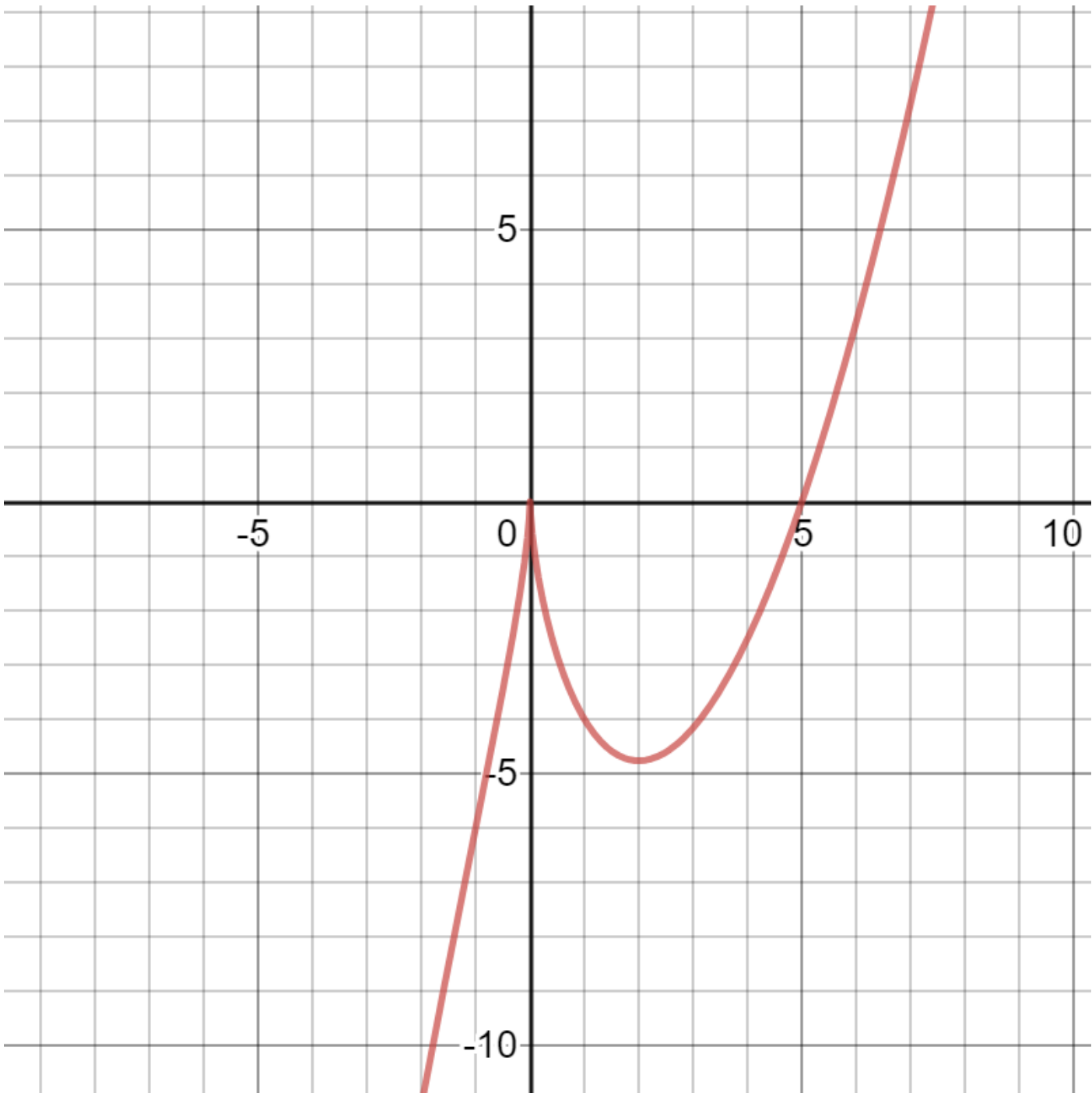
Name:

ID #:

Section: 3

Serial #:

1. Sketch (on the back) the graph of $f(x) = x^{\frac{2}{3}}(x - 5)$ showing ALL the details of your solution here.



With My Best Wishes

Name:

Quiz 3
ID #:

Section: 1 Serial #:

1. Approximate $0.98^{0.98}$ in decimal form.

2. An open top box with a square base is to have a volume of 32 cubic feet. Find the dimensions of the box so that it requires least amount of material.